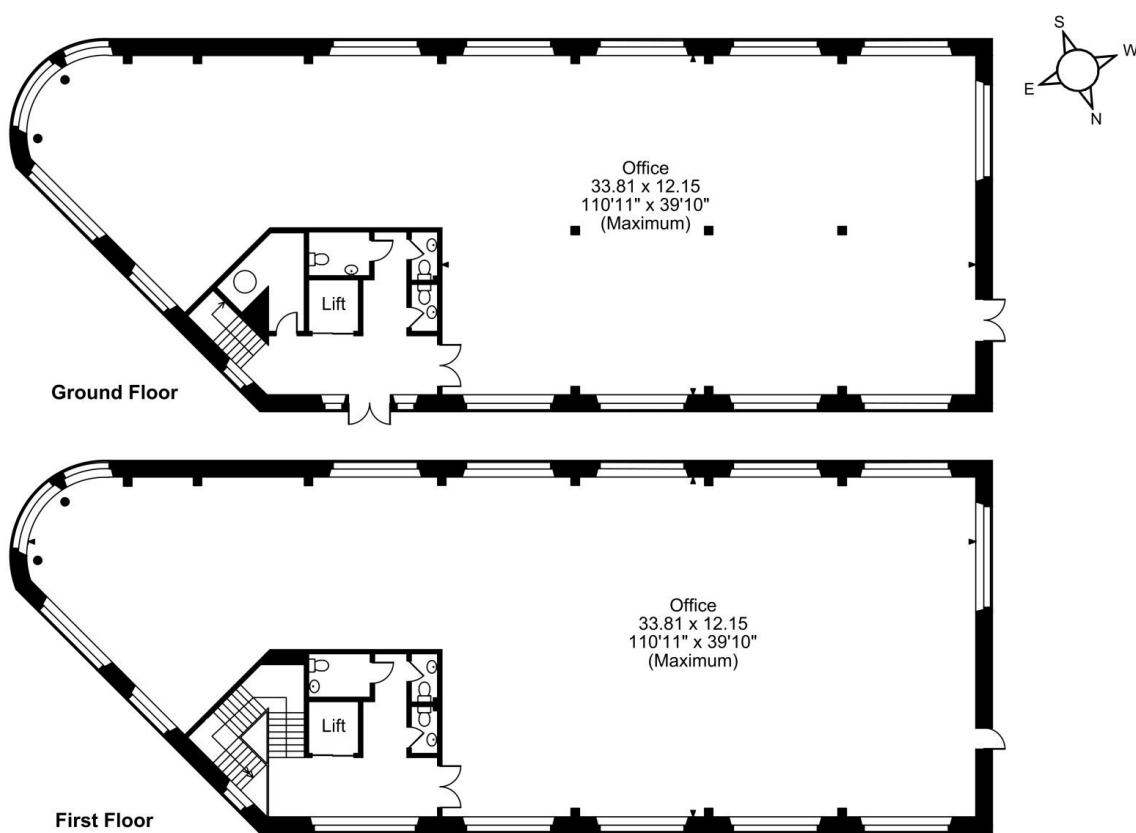


Floor Plans

BRIGHTON HOUSE - 6791 SQ FT | **INDURENT TRIDENT BUSINESS PARK**

Trident Industrial Estate, Warrington Road, Warrington, WA3 6AX

Indurent Trident Business Park, Brighton House, Trident Industrial Estate, Warrington Road,, Warrington,



FOR ILLUSTRATIVE PURPOSES ONLY - NOT TO SCALE

The position & size of doors, windows, appliances and other features are approximate only.

© ehous. Unauthorised reproduction prohibited. Drawing ref. dig/8650060/PJA