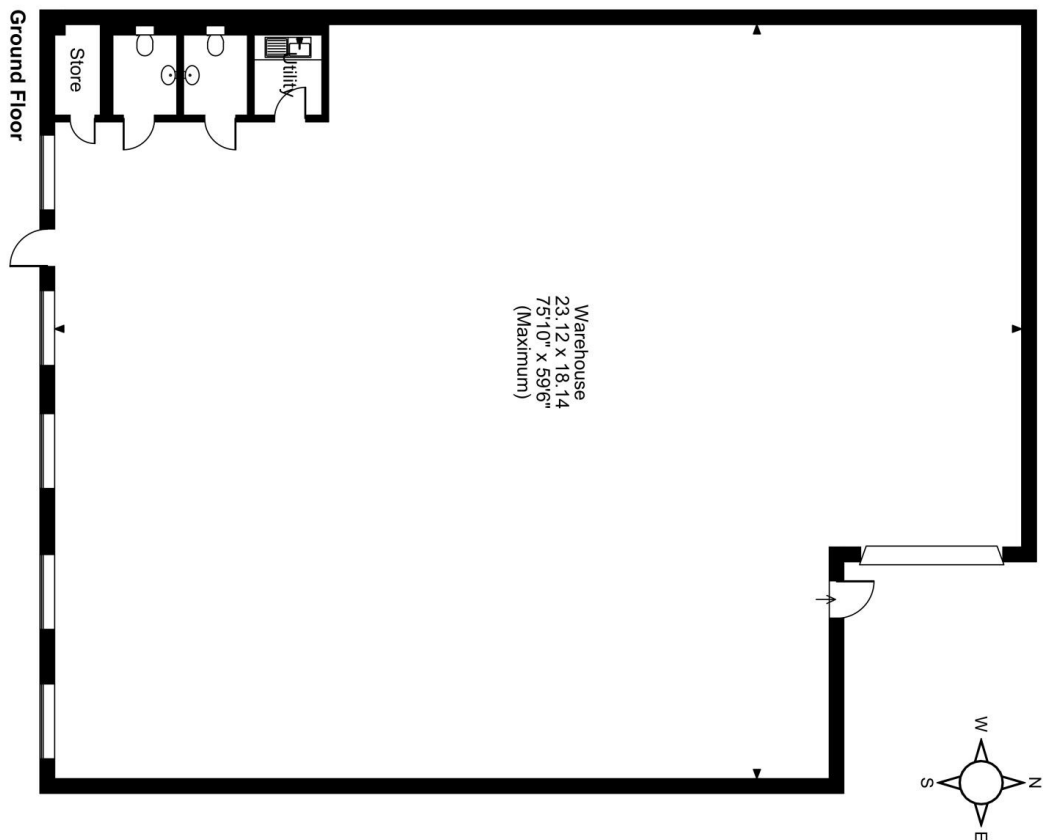


# Floor Plans

UNIT 11 - 4250 SQ FT | **ARKGROVE INDUSTRIAL ESTATE**

Ross Road, Stockton-on-Tees, TS18 2NH

Arkgrove Industrial Estate, Ross Road, Stockton-on-Tees



**FOR ILLUSTRATIVE PURPOSES ONLY - NOT TO SCALE**

The position & size of doors, windows, appliances and other features are approximate only.  
© ehouse. Unauthorised reproduction prohibited. Drawing ref. dig/8636531/PBU



For more info please visit: [unit.info/UIP0101357](https://unit.info/UIP0101357)

[enquiries@indurent.com](mailto:enquiries@indurent.com)

**+44(0) 808 169 7554**