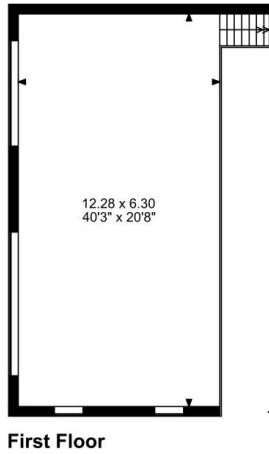
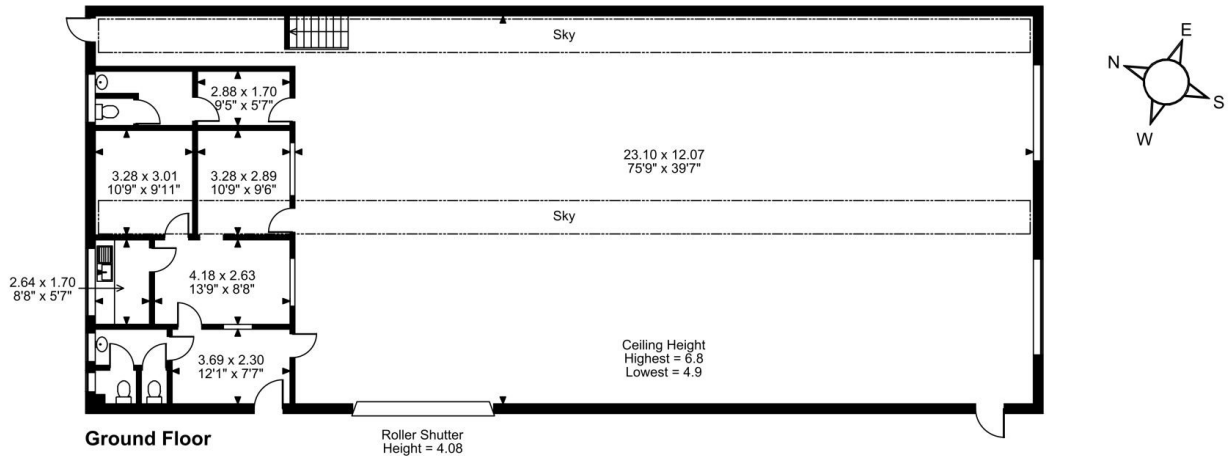


Floor Plans

UNIT 11AA - 3840 SQ FT | **INDURENT TRIDENT BUSINESS PARK**

Trident Industrial Estate, Warrington Road, Warrington, WA3 6AX

Indurent Trident Business Park, Unit 11AA,, Trident Industrial Estate, Warrington Road,, Warrington



FOR ILLUSTRATIVE PURPOSES ONLY - NOT TO SCALE
The position & size of doors, windows, appliances and other features are approximate only.
© ehouse. Unauthorised reproduction prohibited. Drawing ref. dig/8674242/PJA