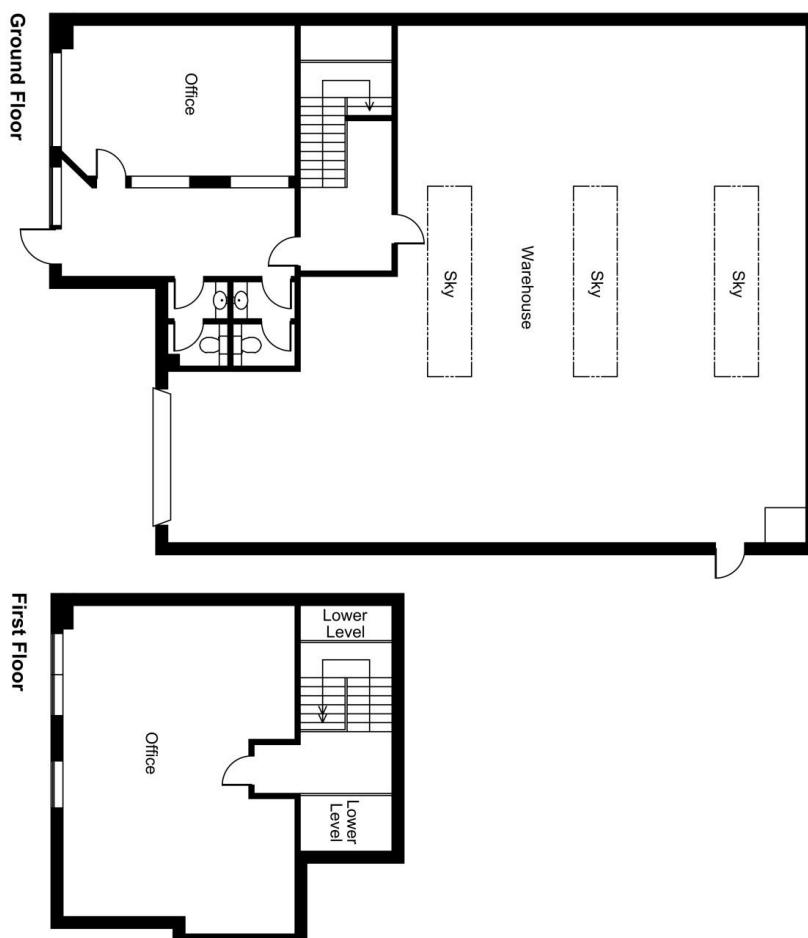
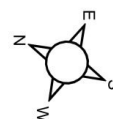


Floor Plans

UNIT 1270 - 3246 SQ FT | 1200 AZTEC WEST

Park Avenue, Bristol, BS32 4SG

Aztec West, Unit 1270, Park Avenue, Bristol



FOR ILLUSTRATIVE PURPOSES ONLY - NOT TO SCALE

The position & size of doors, windows, appliances and other features are approximate only.
© ehous. Unauthorised reproduction prohibited. Drawing ref. dig/8640862/DMS