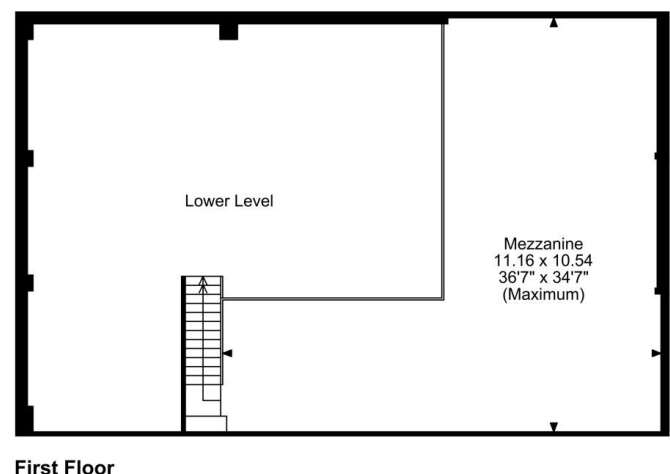
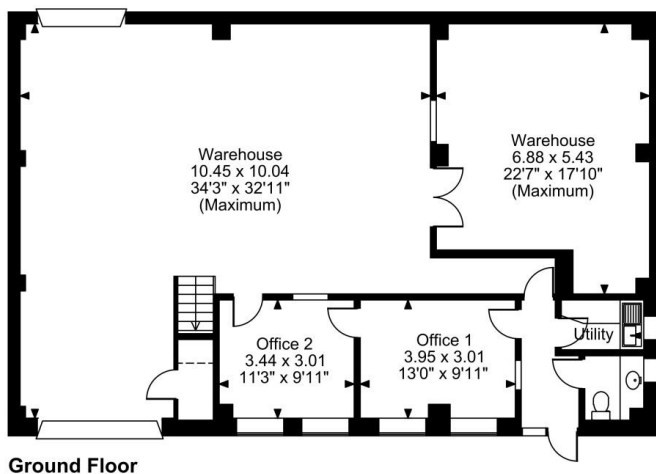
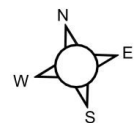


# Floor Plans

UNIT 18 - 1706 SQ FT | **QUEENSWAY INDUSTRIAL ESTATE**

Longbridge Hayes Road, Stoke on Trent, ST6 4DS

Queensway Industrial Estate, unit 18, Longbridge Hayes Road, Stoke on Trent



**FOR ILLUSTRATIVE PURPOSES ONLY - NOT TO SCALE**

The position & size of doors, windows, appliances and other features are approximate only.

□ □ □ Denotes restricted head height

© ehous. Unauthorised reproduction prohibited. Drawing ref. dig/8662933/JCR