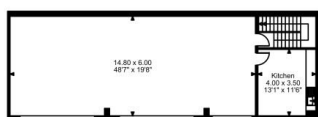
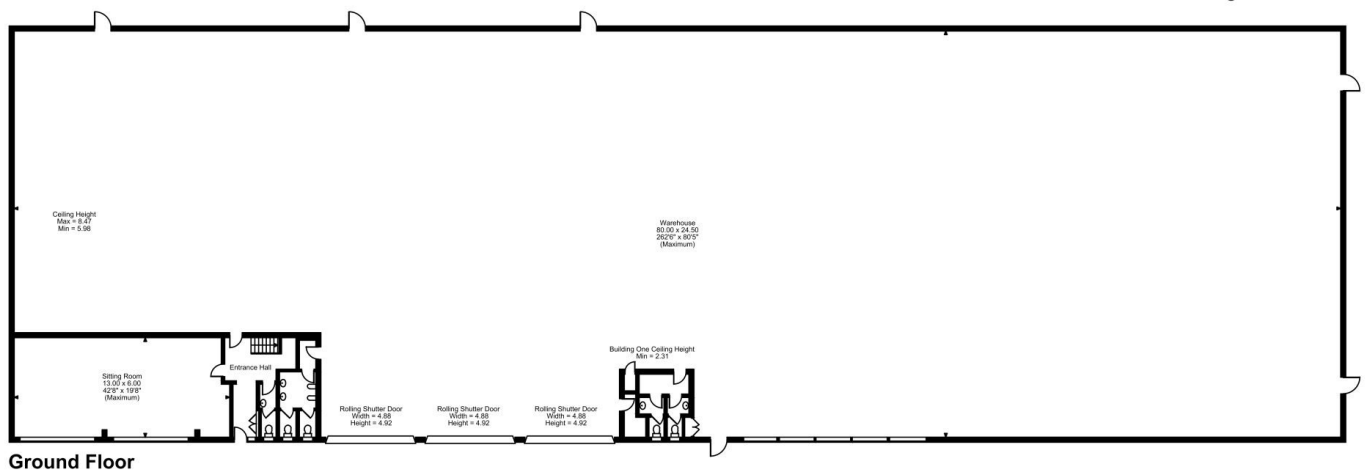
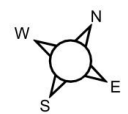


Floor Plans

UNIT 4 & 5 - 22493 SQ FT | **REVIE ROAD INDUSTRIAL ESTATE**

Revie Road, Leeds, LS11 8JG

Revie Road Industrial Estate, Unit 4 & 5, Revie Road, Leeds



First Floor

FOR ILLUSTRATIVE PURPOSES ONLY - NOT TO SCALE

The position & size of doors, windows, appliances and other features are approximate only.
© ehouse. Unauthorised reproduction prohibited. Drawing ref. dig/8676230/SAK