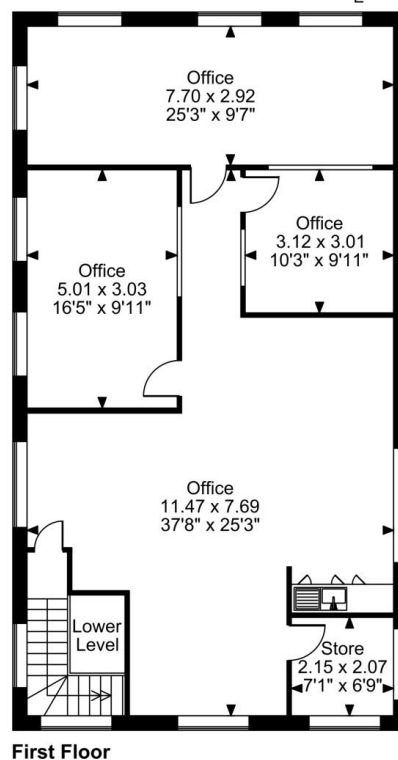
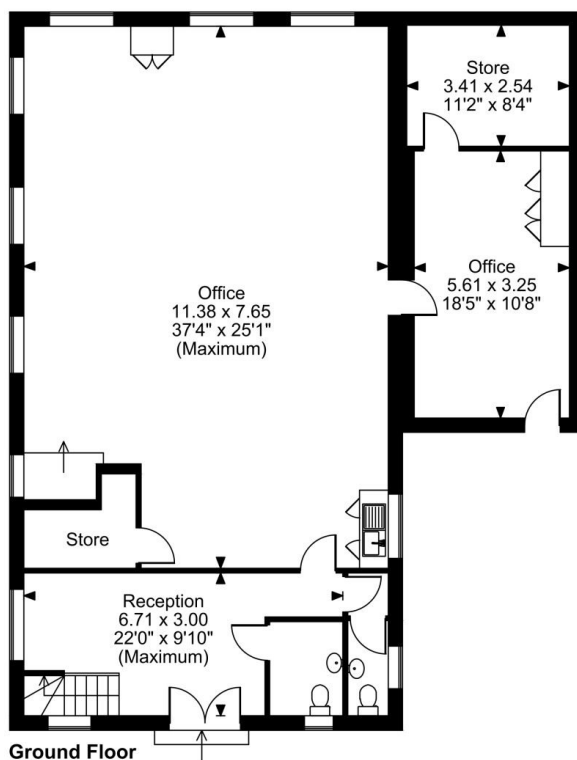


Floor Plans

UNIT 5 - 2630 SQ FT | **BROOKFOOT BUSINESS PARK**

Brookfoot Lane, Brighouse, HD6 2SD

Brookfoot Business Park, Brookfoot, Brighouse
Approximate Gross Internal Area
2690 Sq Ft/250 Sq M



FOR ILLUSTRATIVE PURPOSES ONLY - NOT TO SCALE

The position & size of doors, windows, appliances and other features are approximate only.

© ehouse. Unauthorised reproduction prohibited. Drawing ref. dig/8659882/SMA