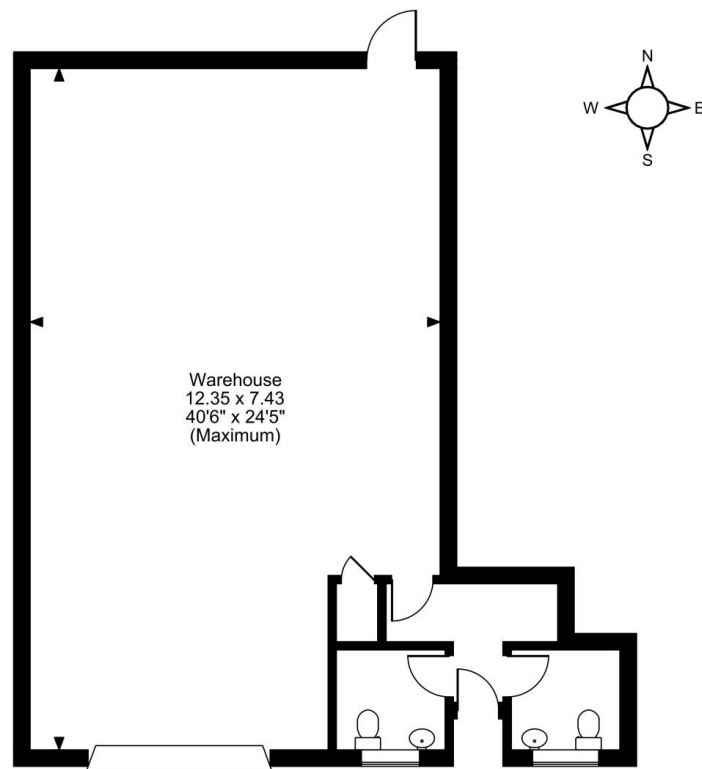


Floor Plans

UNIT 9, HOYLAND ROAD - 915 SQ FT | **HILLFOOT INDUSTRIAL ESTATE**

Hoyland Road, Sheffield, S3 8AB

Hillfoot Industrial Estate, Unit 9, Hoyland Road, Sheffield



Ground Floor

FOR ILLUSTRATIVE PURPOSES ONLY - NOT TO SCALE

The position & size of doors, windows, appliances and other features are approximate only.

© ehouse. Unauthorised reproduction prohibited. Drawing ref. dig/8662437/GRN