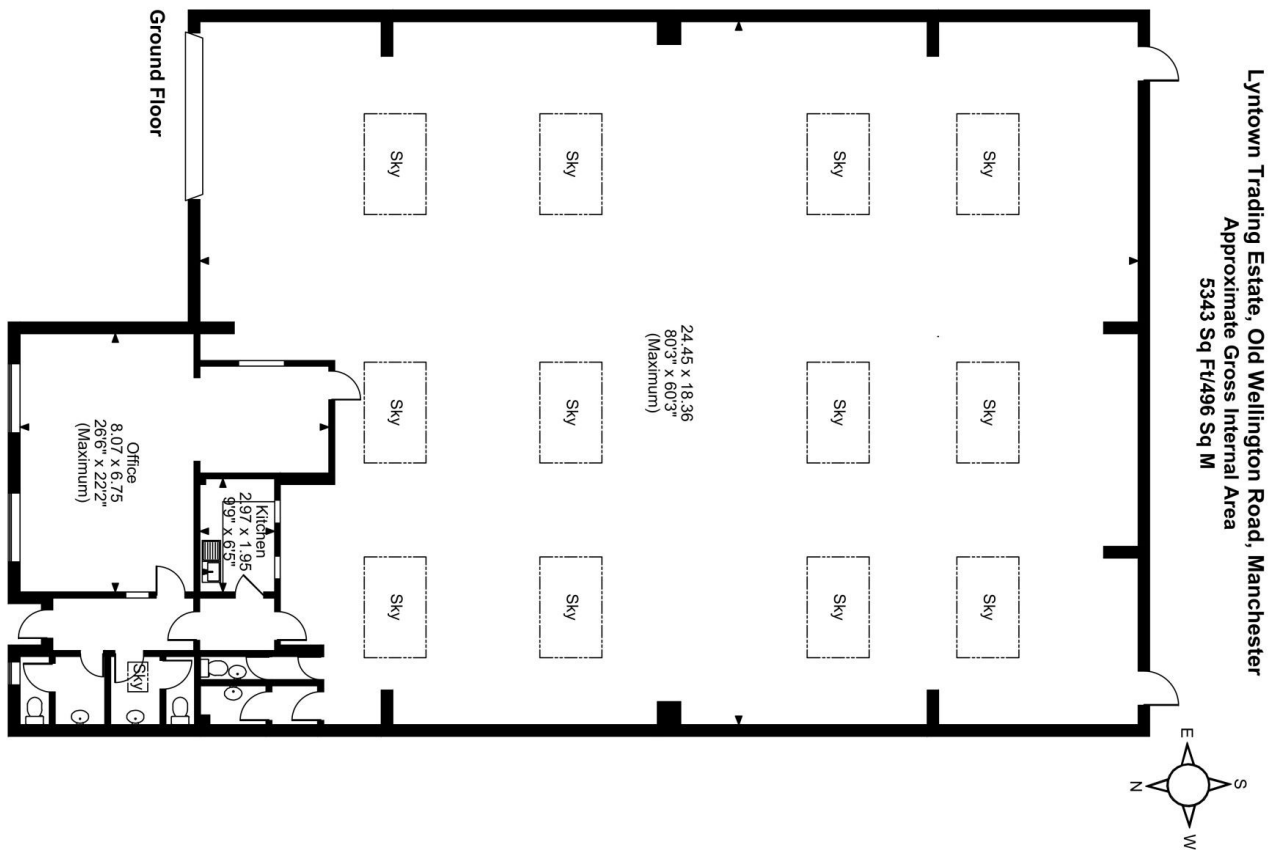


Floor Plans

UNIT A4 - 5361 SQ FT | LYNTOWN TRADING ESTATE

Old Wellington Road, Manchester, M30 9QG



FOR ILLUSTRATIVE PURPOSES ONLY - NOT TO SCALE

The position & size of doors, windows, appliances and other features are approximate only.
© ehous. Unauthorised reproduction prohibited. Drawing ref. dig/8633526/NGS