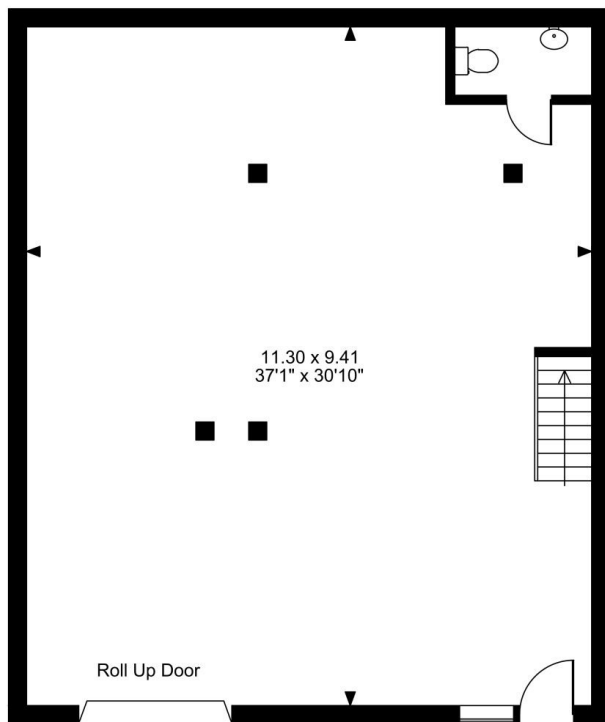
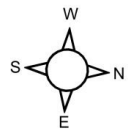


# Floor Plans

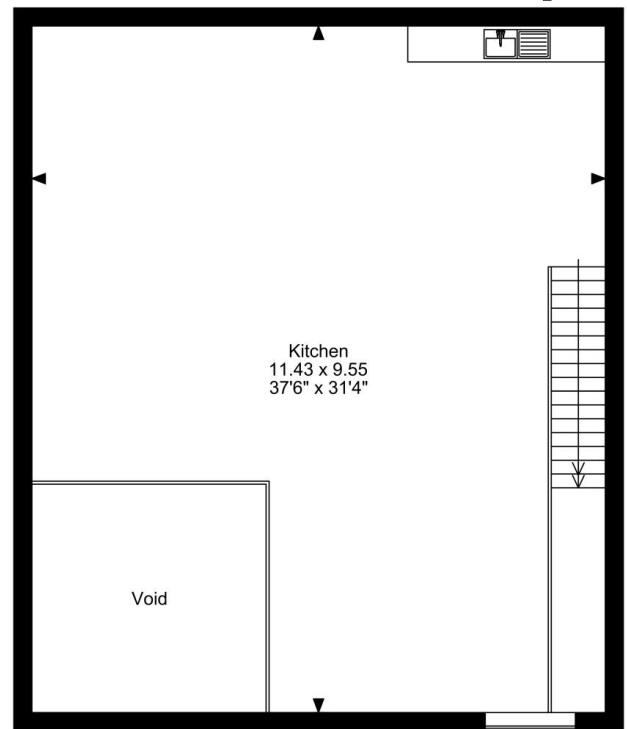
UNIT B7 - 1135 SQ FT | **ACCESS 12**

Station Road, Theale, RG7 4PN

Station Road, Theale



Ground Floor



First Floor

**FOR ILLUSTRATIVE PURPOSES ONLY - NOT TO SCALE**

The position & size of doors, windows, appliances and other features are approximate only.

© ehouse. Unauthorised reproduction prohibited. Drawing ref. dig/8659299/PCU